

SONGLE RELAY

	RELAY ISO9002	SRG
---	---------------	------------



1. MAIN FEATURES

- High contact capacity : 10A
- UL/CSA, TUV recognized.
- Employment of suitable plastic materials to be applied to high temperature and various chemical solution.
- Sealed types available.

2. APPLICATIONS

- Home appliance, air conditioner, heater, etc.
- Automotive Power-window, car antenna, door-lock, etc.
- Office machine, facsimile, etc.
- Vending machine.
- Remote control TV receivers, monitor displays, audio equipment

3. ORDERING INFORMATION

SRG	XX VDC	S	L	C
Model of relay	Nominal coil voltage	Structure	Coil sensitivity	Contact form
SRG	03、05、06、09、12、 18、24、48VDC	S:Sealed type	L:0.36W	A:1 form A
		F:Flux free type	D:0.45W	B:1 form B
				C:1 form C

4. RATING

10A/240VAC 28VDC

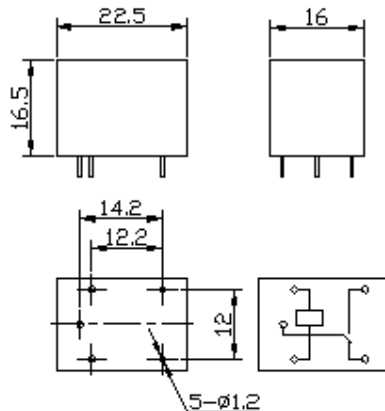
10A/120VAC 28VDC

CCC FILE NUMBER:CH0036746-99 10A/250VDC

UL/CUL FILE NUMBER: E167996 10A/125VAC 28VDC

TUV FILE NUMBER: R9933789 10A/240VAC 28VDC

5. DIMENSION (unit:mm) DRILLING (unit:mm) WIRING DIAGRAM



6. COIL DATA CHART (AT20°C)

Coil Sensitivity	Coil Voltage Code	Nominal Voltage (VDC)	Nominal Current (mA)	Coil Resistance (Ω) $\pm 10\%$	Power Consumption (W)	Pull-In Voltage (VDC)	Drop-Out Voltage (VDC)	Max-Allowable Voltage (VDC)
SRG (High Sensitivity)	03	03	120	25	abt. 0.36W	75% Max.	10% Min.	130%
	05	05	71	70				
	06	06	60	100				
	09	09	40	225				
	12	12	30	400				
	24	24	15	1600				
SRG (Standard)	03	03	150	20	abt. 0.45W	75% Max.	10% Min.	130%
	05	05	89	56				
	06	06	75	80				
	09	09	50	180				
	12	12	37.5	320				
	18	18	25	720				
	24	24	18.7	1280				
	48	48	10	4500	abt. 0.51W			

7. CONTACT RATING

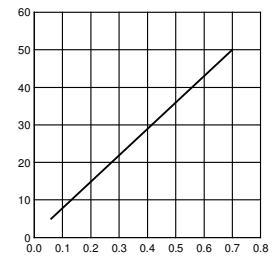
Item	Type	SRG
Contact Capacity Resistive Load ($\cos\Phi=1$)		10A 28VDC 15A 120VAC 10A 240VAC
Inductive Load ($\cos\Phi=0.4L/R=7\text{msec}$)		5A 240VAC 5A 28VDC
Rated Carrying Current		10A
Max. Allowable Voltage		250VAC, 110VDC
Max. Allowable Current		10A
Referenced Min.Applicable Load		5VDC, 10mA
Contact Material		AgCdo

8. PERFORMANCE (at initial value)

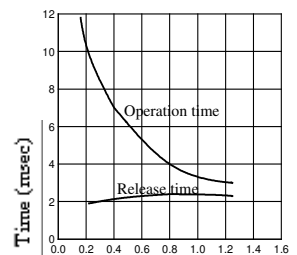
Item	Type	SRG
Contact Resistance		100m Ω Max.
Operation Time		10msec Max.
Release Time		5msec Max.
Dielectric Strength Between coil & contact Between contacts		1500VAC 50/60HZ (1 minute) 1000VAC 50/60HZ (1 minute)
Insulation Resistance		100 M Ω Min. (500VDC)
Max.ON/OFFSwitching Mechanically Electrically		300 operation/min 30 operation/min
Operating Ambient Temperature		-30°C to +70°C
Operating Humidity		45 to 85% RH
Vibration Endurance Error Operation		10 to 55HZ Double Amplitude 1.5mm 10 to 55HZ Double Amplitude 1.5mm
Shock Endurance Error Operation		100G Min. 10G Min.
Life Expectancy Mechanically Electrically		10 ⁷ operations. Min. 10 ⁵ operations. Min.

9. REFERENCE DATA

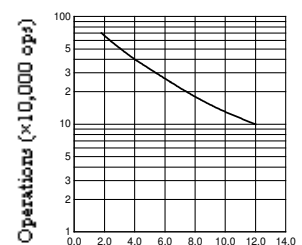
Coil Temperature Rise



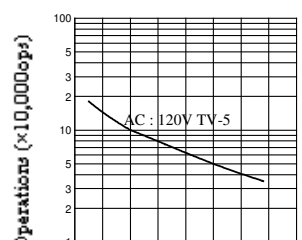
Coil Power (W)
Operation Time



Coil Power (W)
Life Expectancy
AC120V/DC24V $\cos\Phi=1$



Current of Load (A) for SRU
Life Expectancy



Weight	abt. 11grs.
--------	-------------